

Local communities Empowerment within the Protected Areas of Egypt

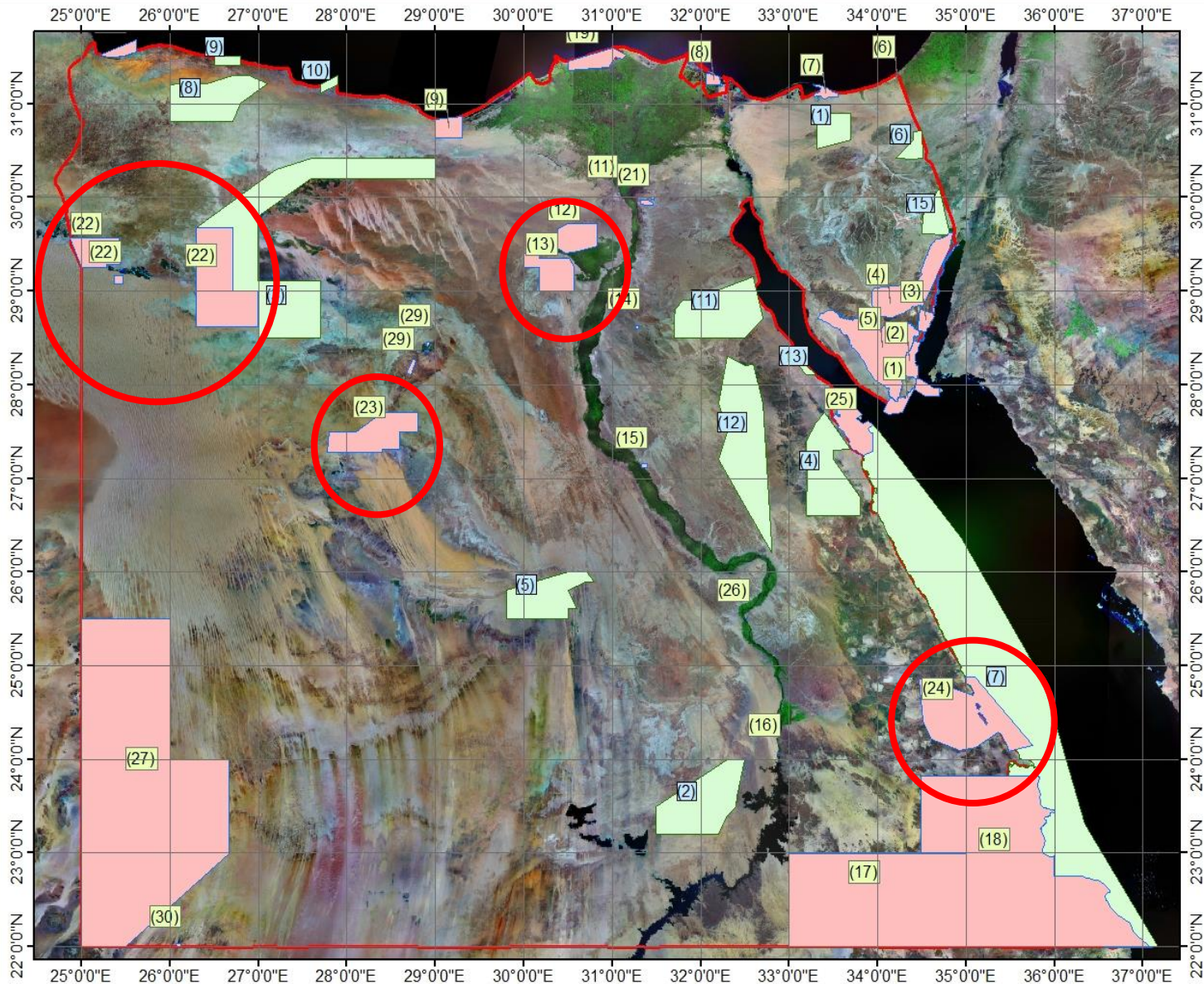
Support to the Egyptian Protected Areas Project
SEPA

Dr Yousria Hamed
Project Manager

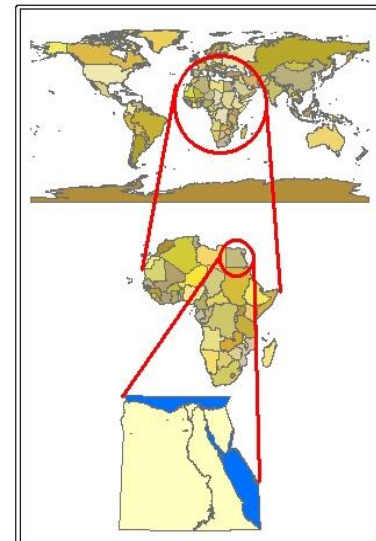


Project Partners

- ✖ Support to the Egyptian Protected Areas **SEPA**
- ✖ United Nations Development Programme **UNDP**
- ✖ Egyptian Italian Environmental Cooperation Programme **EIECP**
- ✖ Ministry of Environment/ Egyptian Environmental Affairs Agency
MSEA/ EEAA

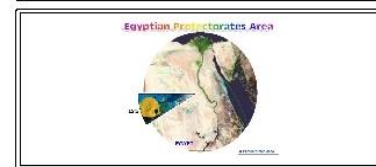


المحميات الطبيعية الحالية والمستقبلية



المحميات الطبيعية المحلية
حدود جمهورية مصر العربية

Projection: UTM, WGS 1984
Datum: WGS 1984
BaseMap:
Source: Egyptian Military Survey Authority
Scale: 1:250,000
Date: 14 March 2003
Raster Information:
Sensor: Landsat7 ETM+
Resolution: 30m
Date: 2000
Band Combination: 7 4 2
Source: NASA



وزارة البيئة
مركز بحوث البيئة
قطاع حماية الطبيعة



The map processing and plotting was performed by GIS and Remote Sensing Team through the Nature Conservation Sector (NCS). All rights reserved. No part of this publication may be reported, stored, adapted, or transmitted in any form or by any means without written permission of Nature Conservation Sector (NCS) - Egyptian Environmental Affairs Agency.

المحميات المستقبلية			المحميات الحالية					
(13) ملاحات رأس شقير	(7) البحر الأحمر	(1) المغارة	(25) الجزر الشمالية للبحر الأحمر	(19) البرلس	(13) وادي الريان	(7) الزرانيق	(1) رأس محمد	
(14) وادي جرافي	(8) القصير	(2) كركر وندقل	(26) الدباية	(20) جزر نهر النيل	(14) كهف وادي سنور	(8) أشنوم الجميل	(2) نبق	
	(9) التوبلة	(3) منخفض القطارة	(27) الجلف الكبير	(21) وادي دجلة	(15) وادي الأسوطى	(9) المعبد	(4) أبو جالوم	
	(10) رأس الحكمة	(4) شايب البنات	(28) السلوم	(22) سيوه	(16) سالوجا وغزال	(10) الغاية المتحجرة	(4) طابا	
	(11) الجلالة القليلة	(5) أم الدبابيب	(29) الواحات البحرية	(23) الصحراء البيضاء	(17) وادي العلاقي	(11) قبة الحصنة	(5) سانت كاترين	
	(12) وادي قنا	(6) القسيمة	(30) جبل كامل	(24) وادي الجمال	(18) عليه	(12) قارون	(6) الأحرار	

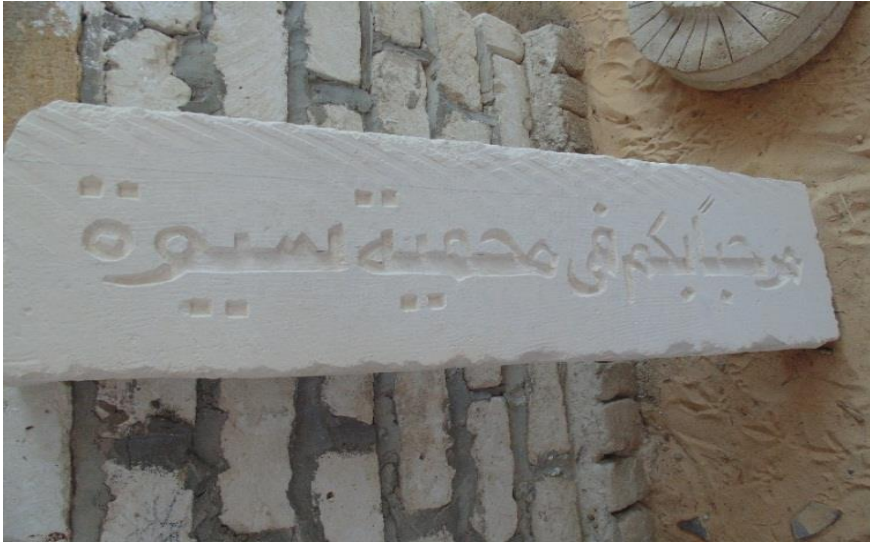
Project Overall Objectives

- Support and enhance the system of the Egyptian Protected Areas.
- Ecotourism promotion and local community empowerment.

Siwa Administrative Building



Marking Boundaries through Permanent Landmarks and Signpost.



Marking Boundaries through Permanent Landmarks and Signpost.





**Wadi El Hitan
infrastructure**

traditional materials

solar energy

**local labors and
local techniques**

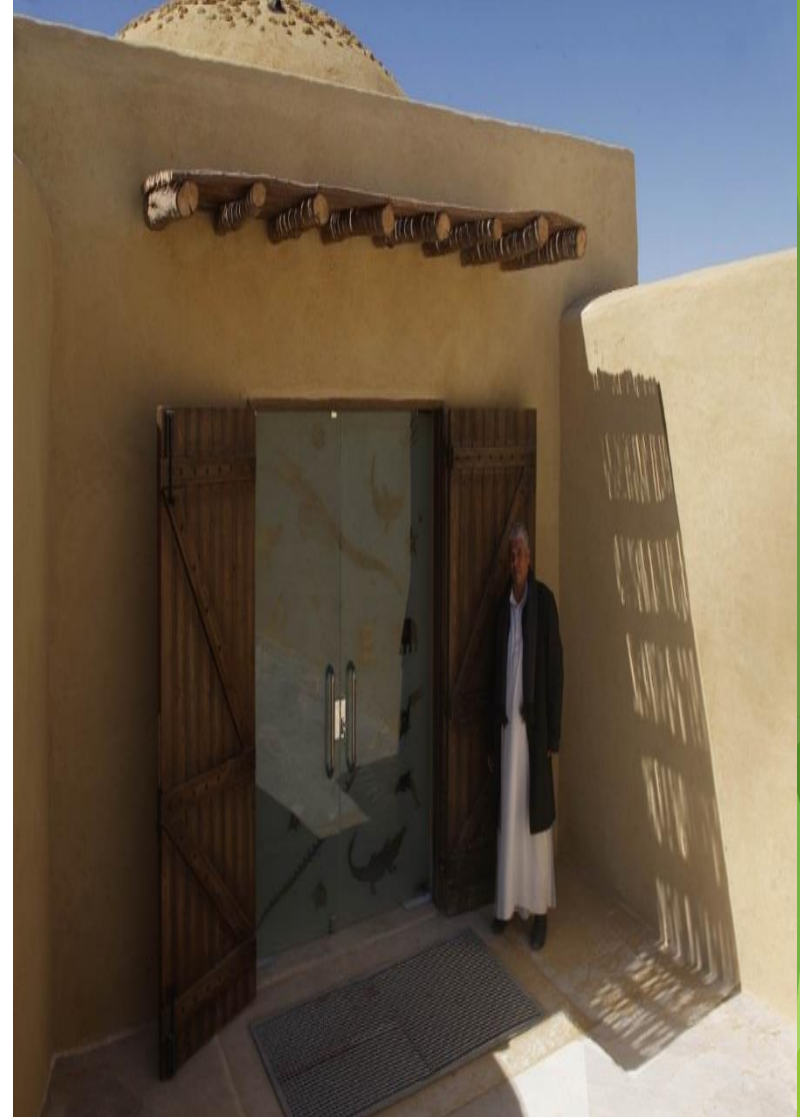
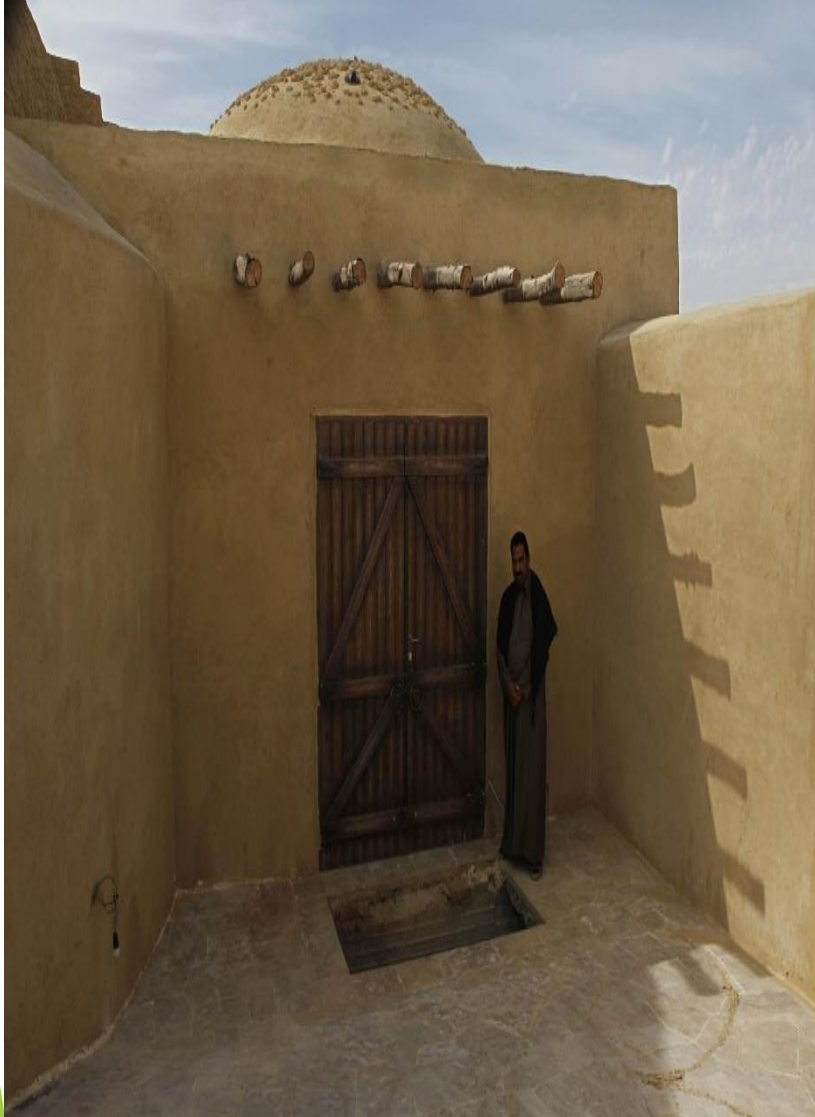
Wadi El Hitan Largest Whale Fossil



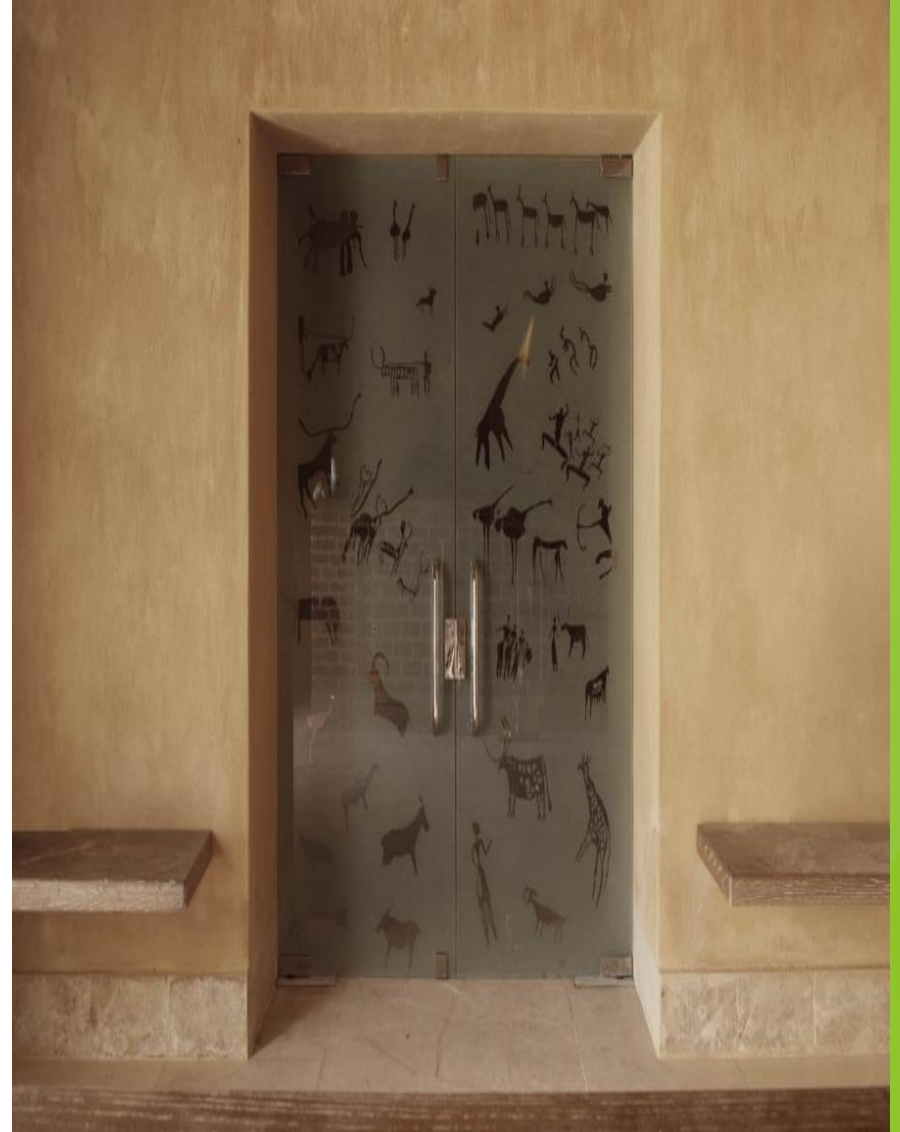
Fossil Treatment and Preparation



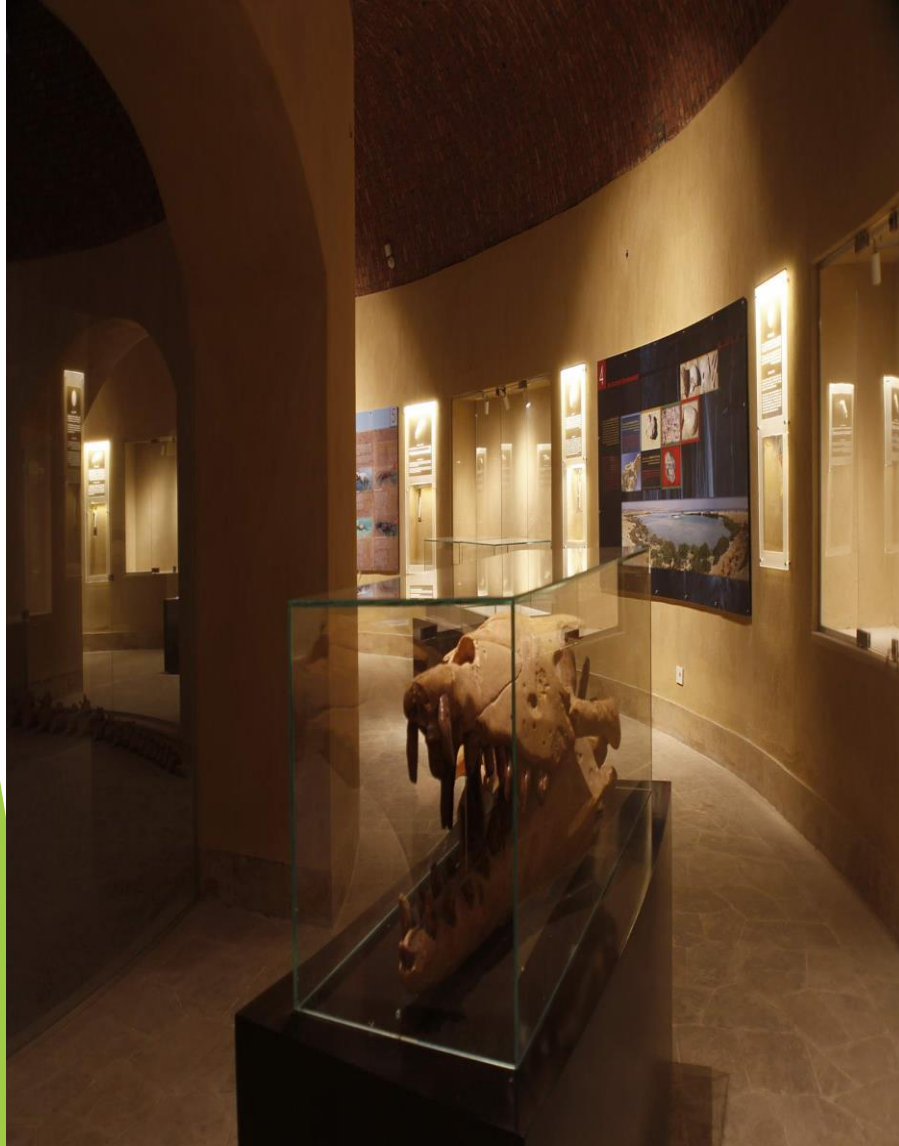
HITAN FOSSIL AND CLIMATE CHANGE MUSEUM



HITAN FOSSIL AND CLIMATE CHANGE MUSEUM



HITAN FOSSIL AND CLIMATE CHANGE MUSEUM



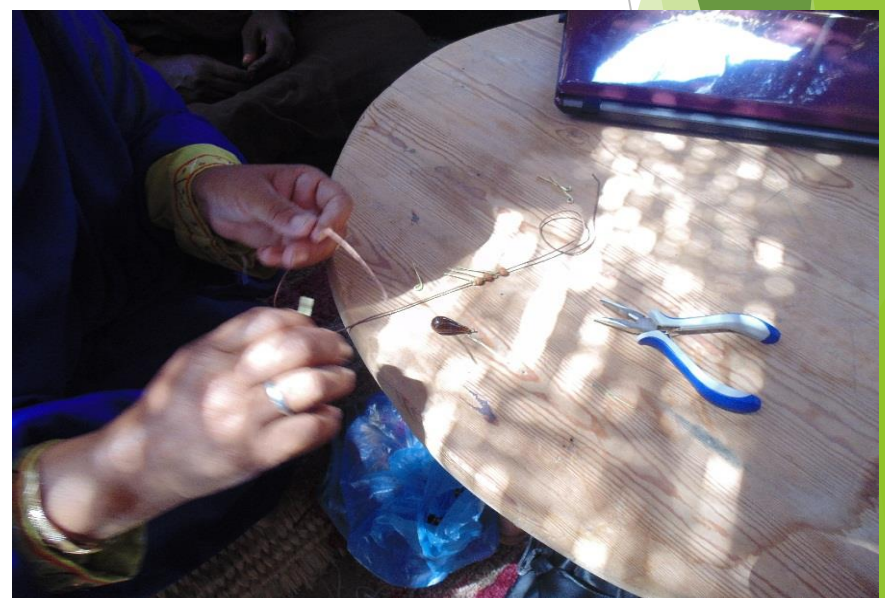
HITAN FOSSIL AND CLIMATE CHANGE MUSEUM



SUPPORTING LOCAL COMMUNITY SIWA



SUPPORTING LOCAL COMMUNITY SIWA



SUPPORTING LOCAL COMMUNITY

WGNP- WRPA



Coloring with grounded coffee beans and ginger



SUPPORTING LOCAL COMMUNITY



Egyptian Italian Environmental Cooperation Programme EIECP III

- ▶ The management schemes currently in use for the project's selected Intervention Areas are enhanced through the integration of effective CBNRM mechanisms to support sustainable development.
- ▶ Responsible and Sustainable Eco-Tourism promoted in the project Intervention Areas.
- ▶ Innovative participatory approaches for inclusive growth around Egypt's PAs tested and ready for institutionalization.



THANK YOU

hamedyousria@yahoo.co.uk